



3 Invicta House  
Rhodaus Close Canterbury CT1 2RG  
£850 PCM

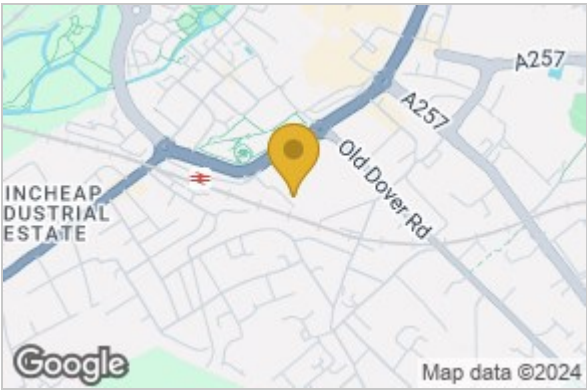


### 3 Invicta House, Rhodaus Close, Canterbury, CT1 2RG

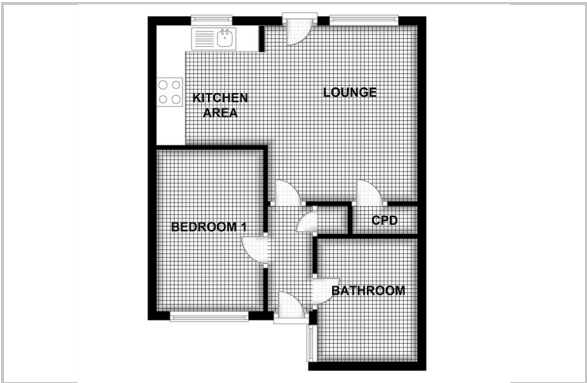
A lovely, one bedroom ground floor apartment! The property is within walking distance of Canterbury East train station, bus station and the city centre. The apartment comprises; of a double bedroom, bathroom and a open plan kitchen/living area.

Note: Council Tax Band A. 12 Months. Furnished.

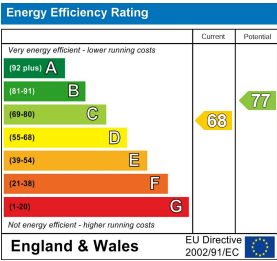
### Area Map



### Floor Plan



### Energy Efficiency Graph



These particulars, whilst believed to be accurate are set out as a general outline only for guidance and do not constitute any part of an offer or contract. Intending purchasers should not rely on them as statements of representation of fact, but must satisfy themselves by inspection or otherwise as to their accuracy. No person in this firms employment has the authority to make or give any representation or warranty in respect of the property.